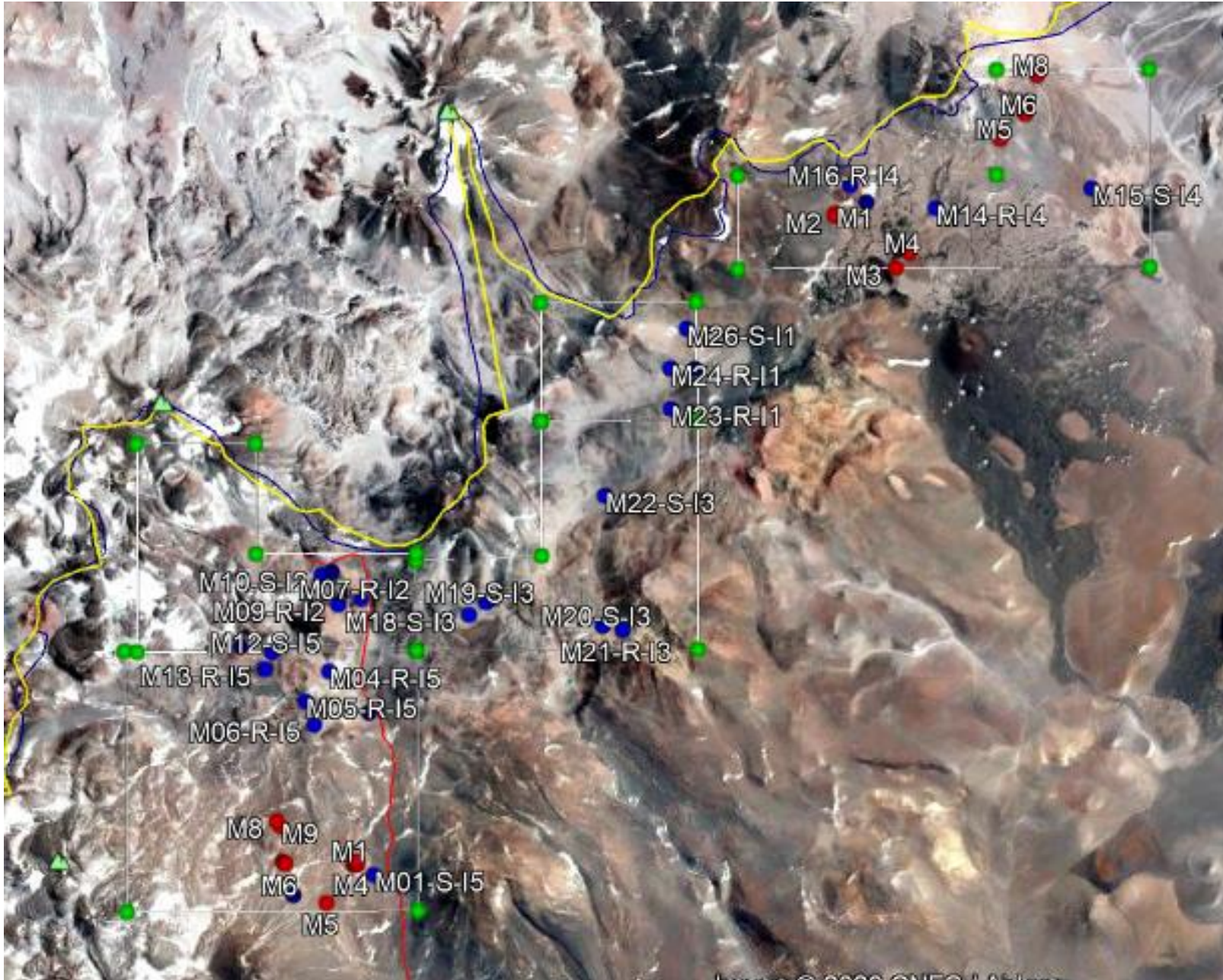
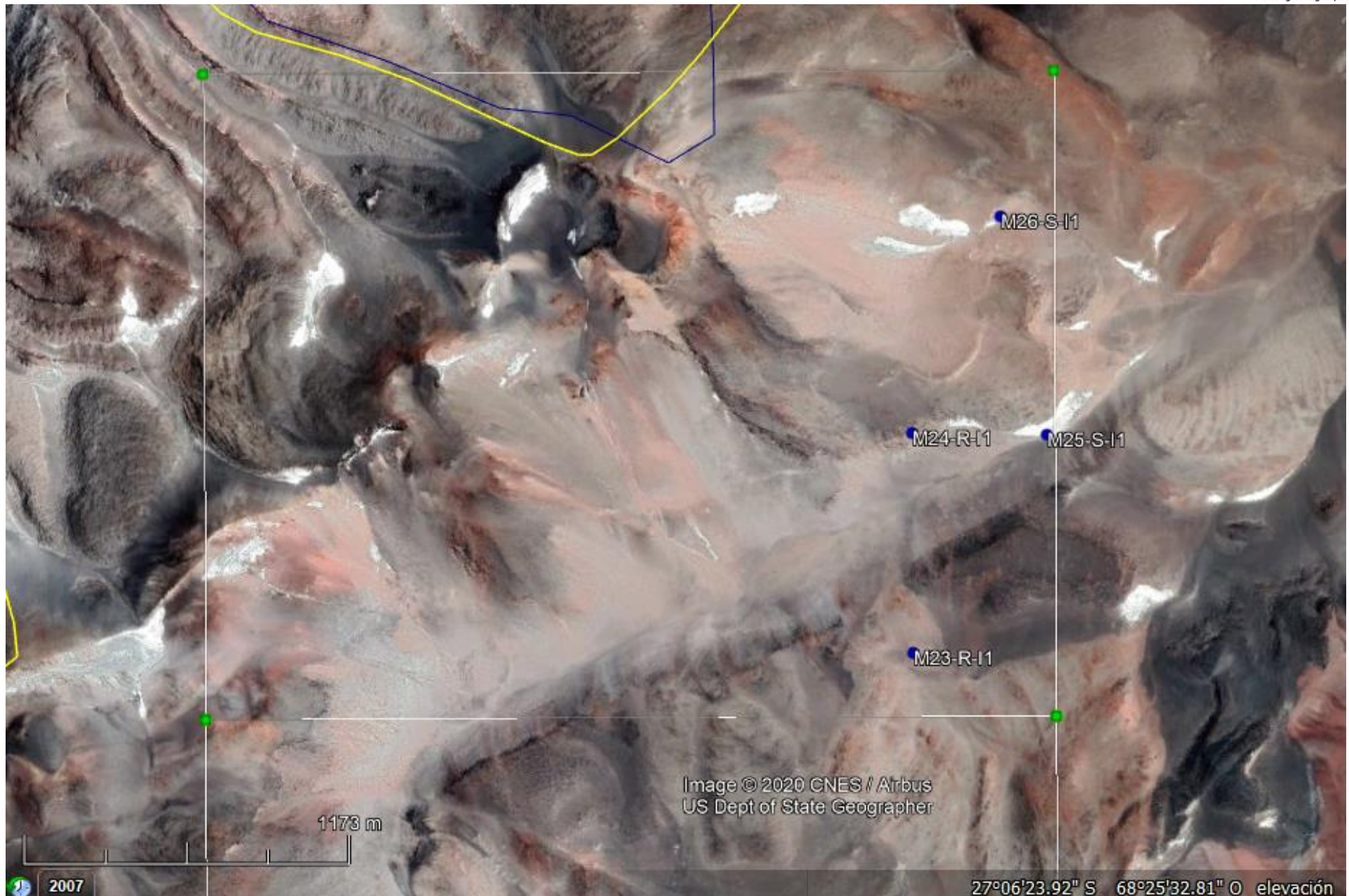


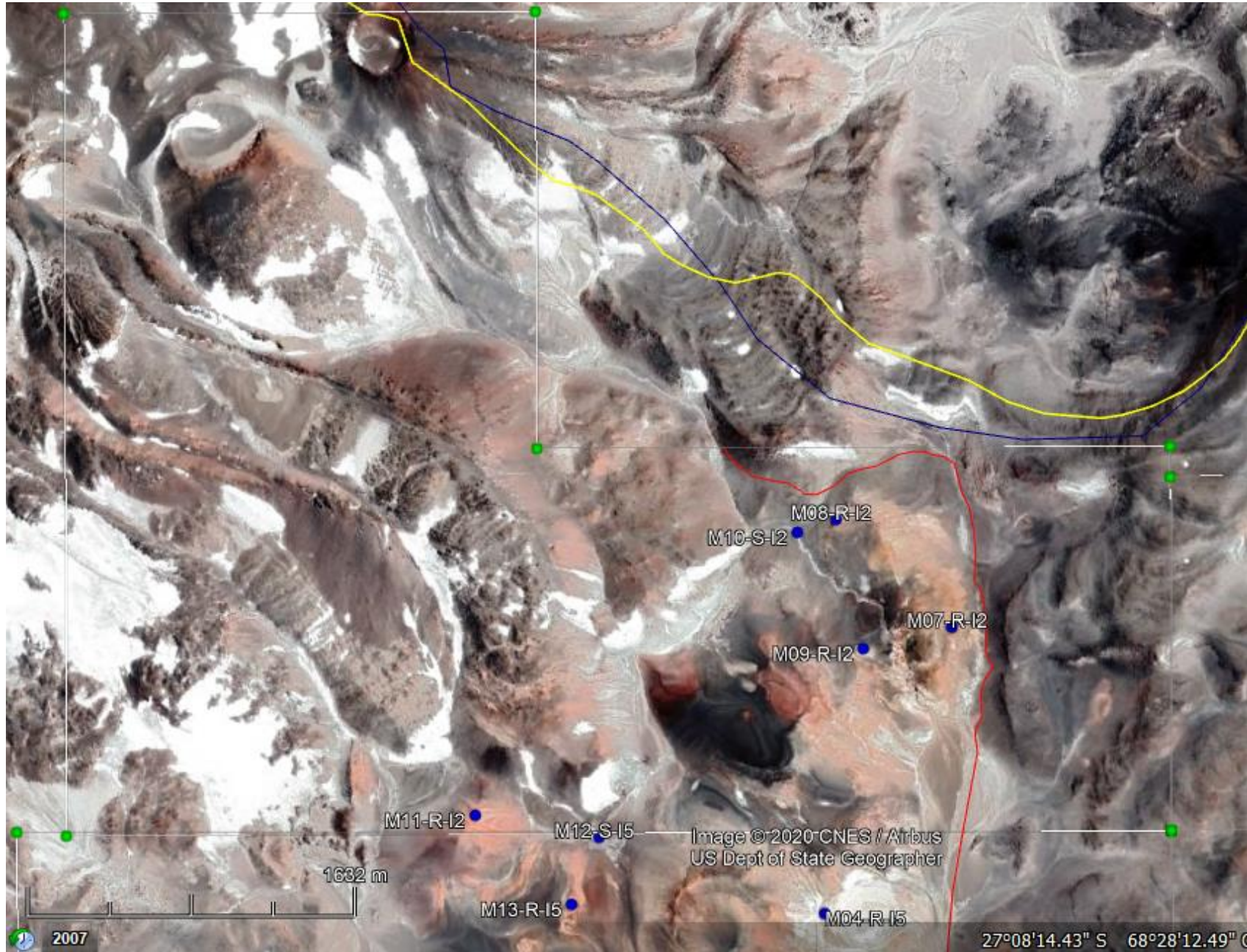
# ROPIEDAD INDIO – MUESTREO 2020



# PROPIEDAD INDIO 1 - MUESTREO



# ROPIEDAD INDIO 2 - MUESTREO



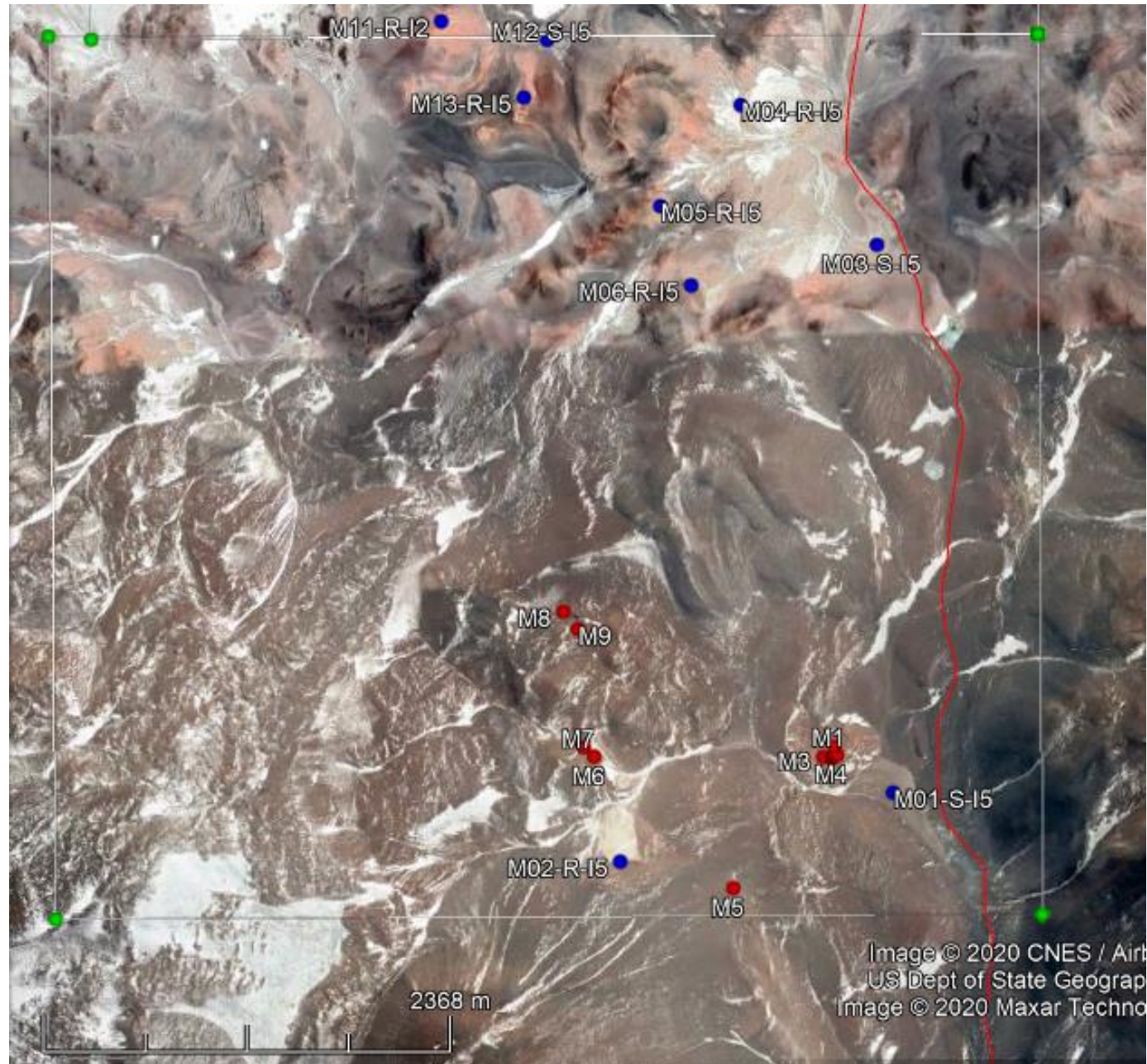
# PROPIEDAD INDIO 3 - MUESTREO



# PROPIEDAD INDIO 4 - MUESTREO



# PROPIEDAD INDIO 5 – MUESTREO



# PROPIEDAD INDIO 5 – MUESTREO

MUESTREO PROPIEDAD INDIO 5						
Kgori Punku Hidrogeología y Geotecnia						
PUNTO DE MUESTREO	N° MUESTRA	PROPIEDAD	ID	LATITUD	LONGITUD	COTA
1	1	5	M01-S-15-G	27° 11' 34.51" S	68° 29' 55.96" O	5327
2	2	5	M02-R-15-G	27° 11' 47.45" S	68° 30' 53.65" O	5565
	3	5	M02-R-15-P	27° 11' 47.45" S	68° 30' 53.65" O	5565
	4	5	M03-S-15-G	27° 9' 51.43" S	68° 29' 59.23" O	5476
4	5	5	M04-R-15-G	27° 9' 25.12" S	68° 30' 28.01" O	5557
	6	5	M04-R-15-P	27° 9' 25.12" S	68° 30' 28.01" O	5557
	7	5	M05-R-15-G	27° 9' 44.11" S	68° 30' 45.03" O	5654
5	8	5	M05-R-15-P	27° 9' 44.11" S	68° 30' 45.03" O	5654
	9	5	M06-R-15-G	27° 9' 59.02" S	68° 30' 38.51" O	5684
	10	5	M06-R-15-P	27° 9' 59.02" S	68° 30' 38.51" O	5684
7	11	2	M07-R-12-G	27° 8' 38.99" S	68° 30' 4.97" O	5583
	12	2	M07-R-12-P	27° 8' 38.99" S	68° 30' 4.97" O	5583
	13	2	M08-R-12-G	27° 8' 21.66" S	68° 30' 25.95" O	5655
8	14	2	M08-R-12-P	27° 8' 21.66" S	68° 30' 25.95" O	5655
	15	2	M09-R-12-G	27° 8' 42.44" S	68° 30' 21.02" O	5633
	16	2	M09-R-12-P	27° 8' 42.44" S	68° 30' 21.02" O	5633
10	17	2	M10-S-12-G	27° 8' 23.74" S	68° 30' 32.96" O	5641
	18	2	M11-R-12-G	27° 9' 9.30" S	68° 31' 31.29" O	5674
	19	2	M11-R-12-P	27° 9' 9.30" S	68° 31' 31.29" O	5674
12	20	5	M12-S-15-G	27° 9' 12.85" S	68° 31' 8.87" O	5613
	21	5	M13-R-15-G	27° 9' 23.65" S	68° 31' 13.83" O	5669
	22	5	M13-R-15-P	27° 9' 23.65" S	68° 31' 13.83" O	5669
14	23	4	M14-R-14-G	27° 4' 30.46" S	68° 23' 13.56" O	5320
	24	4	M14-R-14-P	27° 4' 30.46" S	68° 23' 13.56" O	5320
	25	4	M15-S-14-G	27° 4' 17.81" S	68° 21' 22.04" O	4946
16	26	4	M16-R-14-G	27° 4' 15.74" S	68° 24' 14.59" O	5371
	27	4	M16-R-14-P	27° 4' 15.74" S	68° 24' 14.59" O	5371
	28	4	M17-S-14-G	27° 4' 26.68" S	68° 24' 3.14" O	5280
18	29	3	M18-S-13-G	27° 8' 49.21" S	68° 28' 47.49" O	5229
	30	3	M19-R-13-G	27° 8' 41.09" S	68° 28' 35.31" O	5573
	31	3	M19-R-13-P	27° 8' 41.09" S	68° 28' 35.31" O	5573
20	32	3	M20-S-13-G	27° 8' 56.19" S	68° 27' 11.90" O	5505
	33	3	M21-R-13-G	27° 8' 58.96" S	68° 26' 57.64" O	5541
	34	3	M21-R-13-P	27° 8' 58.96" S	68° 26' 57.64" O	5541
22	35	3	M22-S-13-G	27° 7' 33.36" S	68° 27' 10.41" O	5354
	36	1	M23-R-11-G	27° 6' 38.05" S	68° 26' 23.25" O	5442
	37	1	M23-R-11-P	27° 6' 38.05" S	68° 26' 23.25" O	5442
24	38	1	M24-R-11-G	27° 6' 12.38" S	68° 26' 23.44" O	5473
	39	1	M24-R-11-P	27° 6' 12.38" S	68° 26' 23.44" O	5473
	40	1	M25-S-11-G	27° 6' 12.58" S	68° 26' 5.76" O	5412
26	41	1	M26-S-11-G	27° 5' 47.09" S	68° 26' 11.84" O	5474